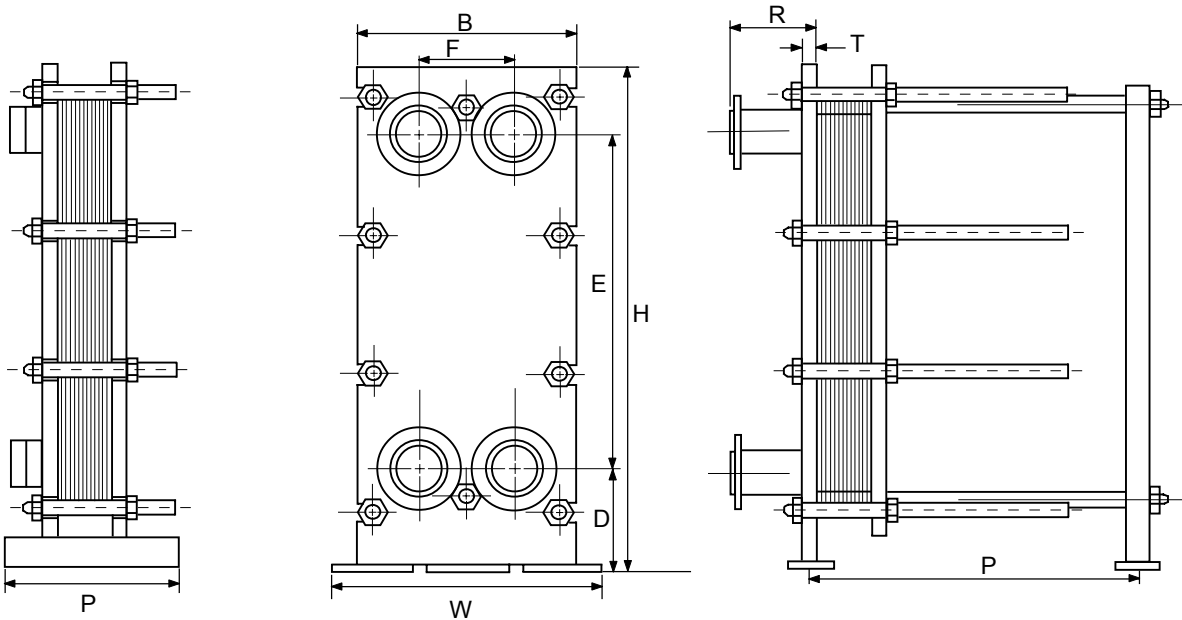
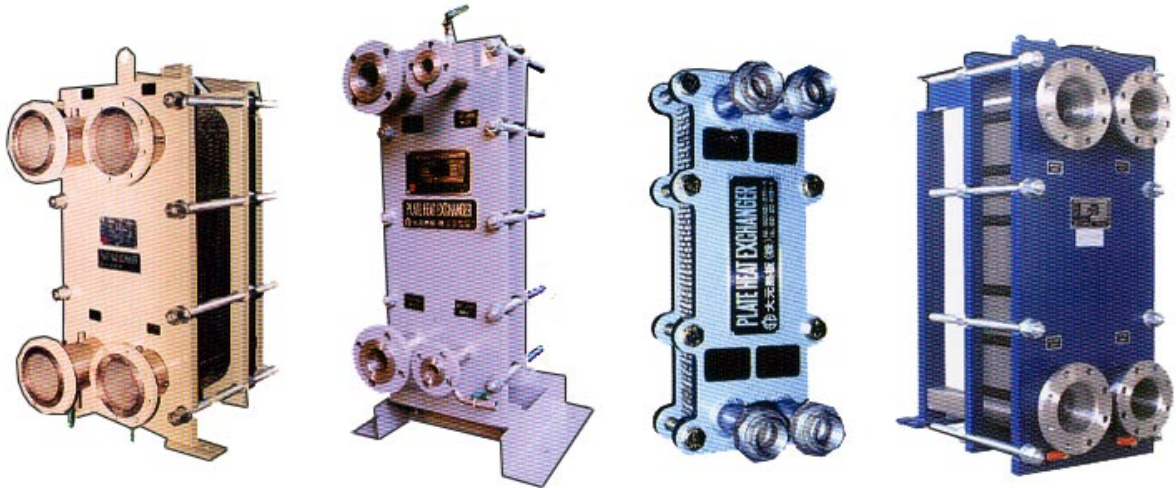
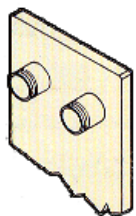


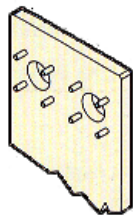
### Variety of Plate Heat Exchanger



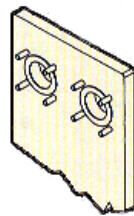
### Connection Options



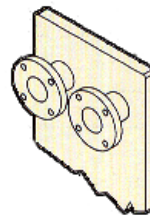
Threaded connection with alloy nozzle



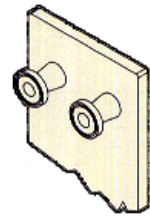
Standard studded connection



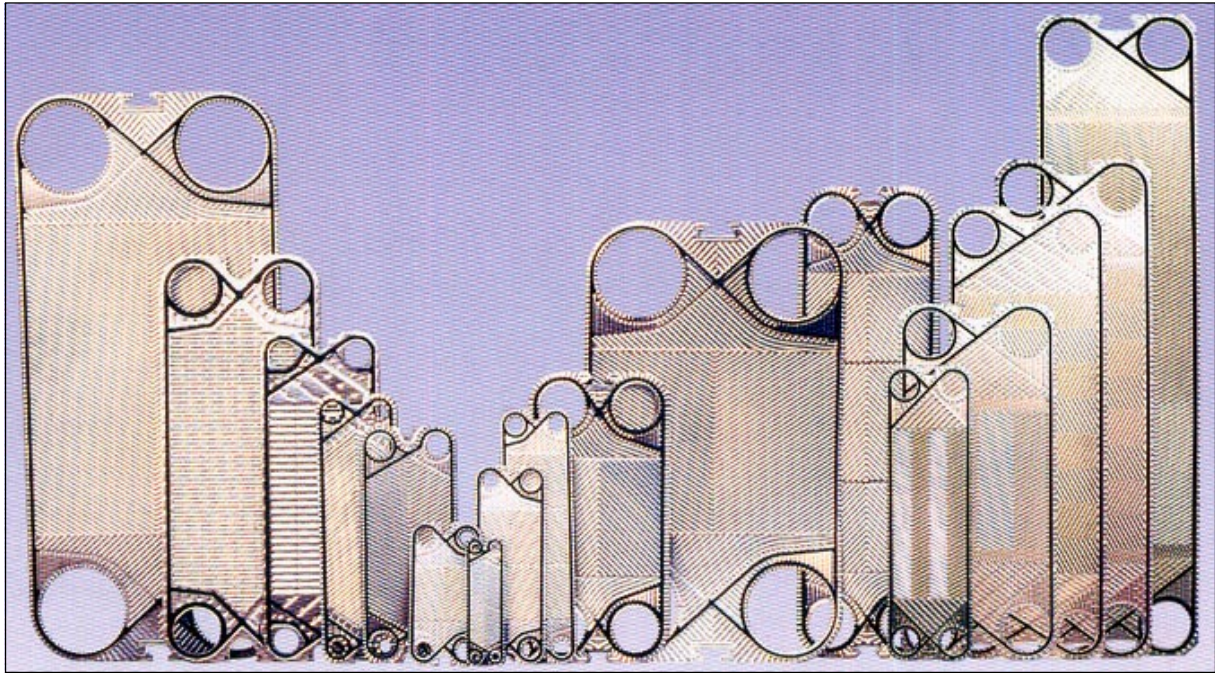
Studded connection with alloy lining



Flanged connection



Sanitary Quick-Disconnect nozzle



TYPE	MAX. F.RATE (m <sup>3</sup> /hr)	CONN. SIZE mm (A)	FRAME SIZE (mm)					NUMBER OF SIZE (P)					
			B	H	W	F	E	D	50	100	200	400	600
DX-1	10	25A	200	540	300	70	377	100	300	-	-	-	-
DX-2	40	50A	320	648	440	142	392	171	400	-	-	-	-
DX-3	40	50A	320	844	440	142	588	171	400	-	-	-	-
DX-4	40	50A	320	1040	440	142	784	171	400	-	-	-	-
DX-5	40	50A	400	1172	600	163	830	247	640	990	-	-	-
DX-17	90	80A	350	1052	350	150	800	170	720	1000	1550	-	-
DX-6	90	80A	420	990	630	194	694	173	640	990	-	-	-
DX-7	90	80A	550	1475	750	257	1010	325	860	1285	2135	-	-
DX-8	160	100A	600	1500	800	300	1100	280	860	1160	1760	2360	-
DX-22	350	100A	470	1084	470	231	719	215	720	1000	1550	-	-
DX-9	350	150A	700	1760	900	319	1200	224	1050	1745	2325	3900	-
DX-143	640	150A	580	1346	580	292	936	210	840	1010	1760	-	-
DX-55	350	125A	580	1647	580	310	1237	210	900	1200	1800	3000	-
DX-161	350	150A	600	1860	800	260	1424	240	900	1250	1950	3350	-
DX-146	640	150A	580	1778	580	292	1368	210	900	1200	1800	3000	-
DX-163	350	150A	600	1260	800	260	784	240	900	1250	1950	3350	-
DX-20S	500	200A	780	1415	950	370	790	315	900	1250	1950	3350	-
DX-20M	500	200A	780	1745	950	370	1120	315	900	1250	1950	3350	-
DX-20L	500	200A	780	2075	950	370	1450	315	900	1250	1950	3350	-
DX-148	640	150A	580	2210	580	292	1800	210	950	1250	1850	3050	4250
DX-30S	1500	300A	1040	1878	1200	540	1178	350	1300	1650	2350	3700	4500
DX-30L	1500	300A	1040	2328	1200	540	1628	350	1300	1650	2350	3700	4500
DX-36S	2000	400A	1130	2040	1180	570	1340	380	1200	1500	2100	3300	4500
DX-36M	2000	400A	1130	2660	1180	570	1960	380	1350	1650	2250	3450	4650
DX-36L	2000	400A	1130	3280	1180	570	2580	380	1500	1800	2400	3600	4800
Max.Operating Temp.	250 °C												
Max.Operating Press.	20 Kg/cm <sup>3</sup>												
Plate Material	STS 304, 304L, 316, 316L, AVESTA, 254SMO, HASTELLOY-B, C, TITANIUM, TI-PD, NLCP(NICKEL), AL-BRASS												
Gasket Material	NITRILE (NBR), HNBR, HYPALON, BUTYL, FPM, FPM-G, EPDM (Ethylene Propylene Diene Methylene), SILICONE, NEOPRENE												
Frame Material	CARBON STEEL, STS 304, 316, STS LINING												